

## Annual Report 2019-2020

### Executive Summary

Throughout the world, geological survey agencies mandated by government maintain the systematic subsurface information that is needed for government and society to function optimally. As with other federal systems, the US has a federal survey – the US Geological Survey (USGS) which has a budget of >\$1B and ~9,000 employees – and state geological surveys that presently receive total annual funding of \$241M, and have over 1840 employees. The Minnesota Geological Survey (MGS), established as part of the University of Minnesota in 1872, has been located at 2609 West Territorial Road in St Paul since 2015, and has a budget of \$3.3M/year and a staff of 38 that has grown by 30% and stabilized over the past decade. Current MGS focus is on the goals of Legislative water resource planning that specifies the need for statewide completion within a decade or so, accompanied and followed by updating, of multi-layered County Geologic Atlases constructed in partnership with MN Department of Natural Resources (DNR) and with Counties; there is concurrent focus on the research, databases, outreach, and statewide mapping needed to optimize the Atlases.

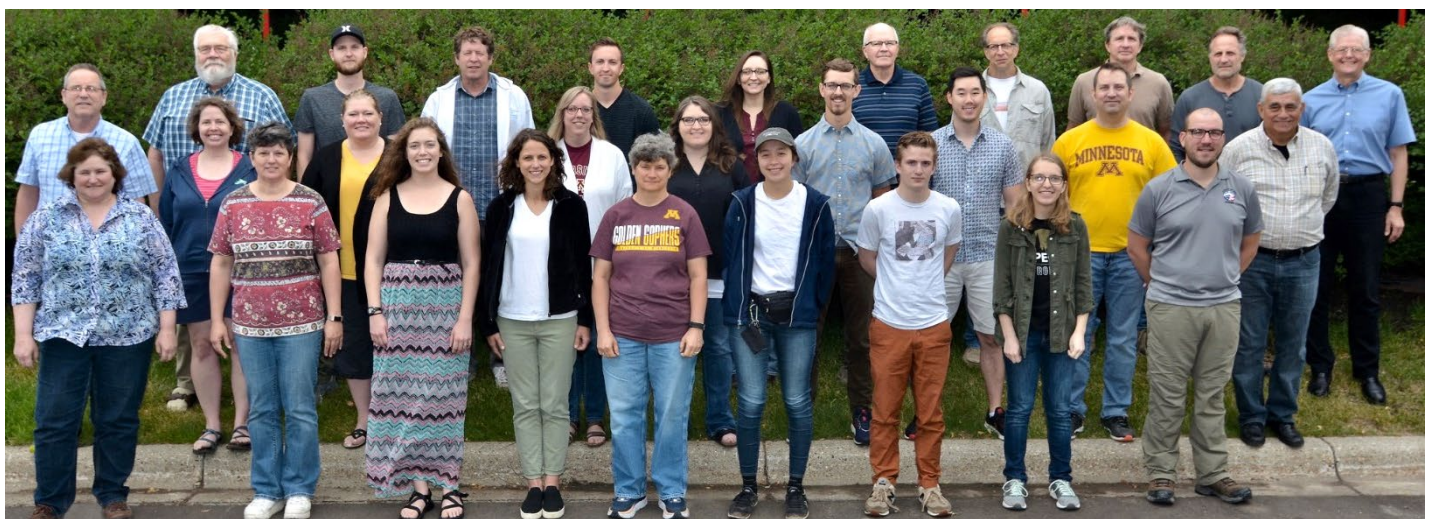
### MGS Mission

Minnesota Geological Survey serves the people of Minnesota by providing systematic geoscience information needed to support stewardship of water, land, and mineral resources. MGS geological mapping and research evolve with the progress of science and technology, and the MGS works closely with

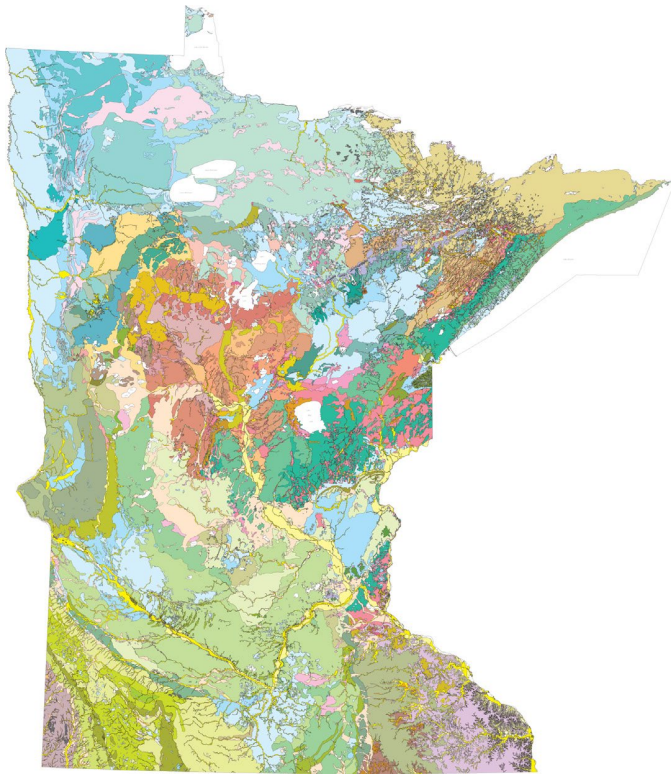
university, government, industry, and community partners to ensure that we respond to the diverse needs of the people.

### MGS History

In 1872, the Legislature established the Geological and Natural History Survey of Minnesota as part of the University of Minnesota, with Newton Horace Winchell as 1<sup>st</sup> Director. The Survey was discontinued upon Winchell's retirement in 1900 and publication of his Final Report on The Geology of Minnesota in 1901, although the natural history function later became the Bell Museum. In 1911, new Department Chair William H. Emmons of USGS specified reinstatement of a State Geological Survey as a condition of his acceptance, and he became 2<sup>nd</sup> Director of the Survey. Ensuing Directors, based in Pillsbury Hall, were Frank F. Grout in 1944, George M. Schwartz in 1948, and Paul K. Sims in 1961 – their era culminated with 'Geology of Minnesota: A Centennial Volume' in 1972, and a move off-campus, to Eustis Street in 1970, and to University Avenue in 1983. Matt S. Walton, appointed Director in 1973, oversaw expanded geophysical surveys to support mineral exploration, as well as initiation of drillhole databases and the County Geologic Atlas program. Priscilla C. Grew of California became Director in 1986, MGS geologist David L. Southwick succeeded her in 1993, and L. Harvey Thorleifson of the Geological Survey of Canada was appointed Director in 2003. The post-~2000 focus has been on optimizing statewide geoscience information needed for groundwater management.



Minnesota Geological Survey staff, June 2019



*The new state Quaternary map, S-23 (Lusardi, et al. 2019)*

## MGS Publications, Mapping, and Databases

MGS is fulfilling its role primarily through 1:100,000 and 1:500,000 mapping of surficial geology, bedrock geology, subsurface geology, bedrock topography, and sediment thickness. The geological mapping is first published as authored and peer-reviewed geological maps, and is also being assembled as a 2-resolution, layered set of databases that includes the offshore, that underlies bathymetric and soil mapping, and that is as compatible as possible with neighbors. Efforts to refine stratigraphic nomenclature are ongoing. Progressively more seamless geological polygons, at 1:100,000 and 1:500,000, are tending to have thickness indicated, while properties, heterogeneity, and uncertainty will gradually be more specified. Parsing of legends, to facilitate queries, is using broadly accepted, well-defined terminology, to facilitate inference of properties. A layered 1:500,000 state bedrock geologic map is now complete, with mapping of thickness and underlying geology for Precambrian layers completed in 2020, and a new state Quaternary geology map in 2019. New 1:100,000 mapping is being completed as County Geologic Atlases, is meant to be complete statewide within a decade or so, and is focused on societal needs, with an emphasis on groundwater protection and management, while taking a broad approach. Where required to resolve issues, 1:24,000 mapping is conducted. The geological mapping is accompanied by associated spatial databases. The publication database, which is spatial through publication footprints, includes over 50,000 pages, and 700 scanned maps, both searchable and web accessible. Geological databases include field observations, drillhole data, karst features, as well as sediment texture and lithology. Geological collections include cuttings, geochemical samples, hand samples, sediment samples, and thin sections. Geophysical databases include borehole geophysics, gravity, magnetic, rock properties, and soundings; geochemical databases include groundwater, soil, and soil parent material; geochronological

databases are in development. MGS coordinates with the DNR drill core library and mineral exploration document archive, the Bell Museum fossil collection now stored in Ohio, and the DNR aquifer properties database.

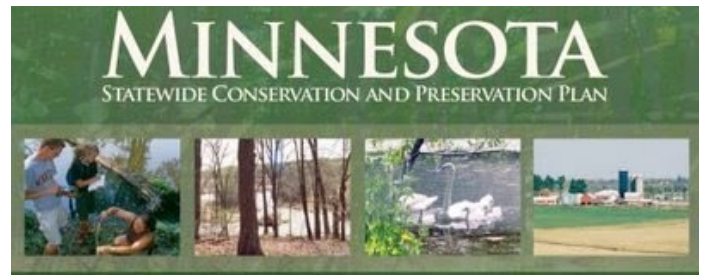
## County Geologic Atlas Program

County Geologic Atlases provide information essential to sustainable management of groundwater resources, for applications such as aquifer management, groundwater modeling, monitoring, permitting, remediation, water allocation, well construction, and wellhead protection. Atlases define aquifer properties and boundaries, as well as the connection of aquifers to the land surface and to surface water resources. They also provide a broad range of information on county geology, mineral resources such as construction materials, and natural history. The atlases thus are also useful to consultants, exploration efforts, educators, and the public.

A complete atlas consists of a Part A prepared by MGS that includes the water well database and 1:100,000 scale geologic maps showing properties and distribution of sediments and rocks in the subsurface, and a Part B constructed by DNR that includes maps of water levels in aquifers, direction of groundwater flow, water chemistry, and sensitivity to pollution. Atlases in most cases are initiated by a request from a county and an offer to provide in-kind service. A [User's Guide to Geologic Atlases](#) helps non-geologists understand the information products and their uses. Atlases are available in print, or in [digital formats](#), including pdfs and GIS files.

## Planning and Progress

MGS priorities have been specified by a series of broadly consultative State resource planning exercises.



The Statewide Conservation and Preservation Plan was commissioned in 2006, and completed in 2008. The intent was to create an integrated inventory and assessment of Minnesota's environment and natural resources that could guide decision-makers on future short and long term planning, policy, and funding. A recommendation to improve understanding of groundwater resources focused on development of a large-scale, hydrologic-system framework for understanding how today's decisions may affect tomorrow's needs. This recommendation specified statewide coverage of county geologic atlases or comparable information products as being needed.

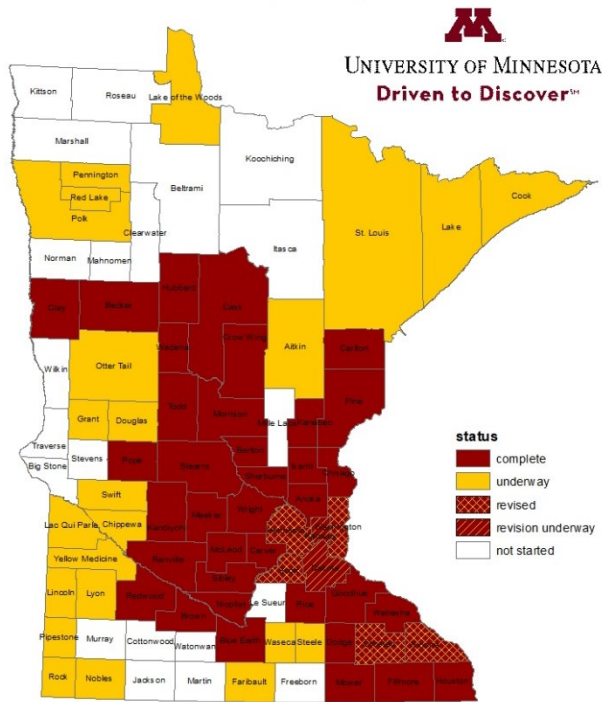
In 2011, the Minnesota Water Sustainability Framework further advocated that a measure of our progress in obtaining a complete picture of groundwater resources in Minnesota should be the rate of completion of county geologic atlases by MGS and DNR. The report therefore advocated that the pace of completion of the county geological atlases by the MGS should, at a minimum, be doubled to allow completion within a decade, followed by review and updating on a regular schedule. These



recommendations then guided the Six-Year Strategic Plan for Minnesota’s Environment and Natural Resources Trust Fund (ENRTF), which is administered by the Legislative-Citizen Commission on Minnesota Resources (LCCMR). The Plan, completed in 2013, advocated statewide acquisition of County Geologic Atlases by the year 2020. MGS therefore is focused on completion and updating of County Geologic Atlases, while ensuring that we take a broad approach, and that we optimize the scientific quality of all related activities.



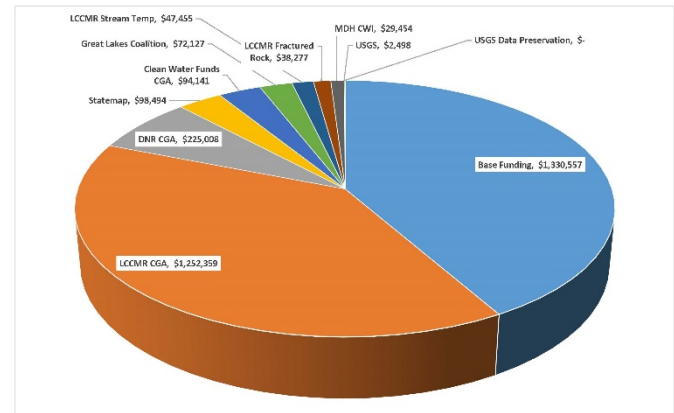
Atlases are complete for 41 counties and of these, 5 have been revised and 2 revisions are underway. There are 23 new atlases underway; 21 counties have not yet been started. At the current pace and a completion rate of ~5 per year, statewide coverage will be achieved in less than a decade.



Status of County Geologic Atlas mapping

## Resources

**Funding:** Whereas funding to the ~9,000 USGS employees is >\$1B/year, total revenue to the ~1870 employees at State Geological Surveys in FY20 was \$241M, which is an all-time-high, even more than the level of \$237M reached in 2012 that related to the federal stimulus. The average state geological survey thus consists of ~37 staff, who receive ~\$4.9M in funding. While MGS income tends to arrive in multiyear grants, we spent \$3.3M this past year, similar to the level of the year before. MGS funding averaged \$2.4M from 2003 to 2011, and the average since then has been \$3.2M. MGS relies on about \$1.3M in base funding and ~\$2.2M in grants and contracts, primarily from the ENRTF through LCCMR. Additional funding from both sources covers non-personnel costs such as travel, drilling, equipment, supplies, and services. Two years ago, a financial and administrative audit found no concerns.



Sources of 2018-2019 expenditures

**Staffing:** MGS staffing was stable at 28 full-time-equivalents (FTE) from 2003 to 2011; since then, staffing has averaged 36 FTE. Last year, MGS was one of 17 state geological surveys in the USA whose staff is 40% or more female. This compared to 38% nationwide. We currently are 27 geologists, 3 information professionals, 2 administrative staff, and 6 students equivalent to ~3 FTE. A group consisting of our longest serving staff members has begun to retire, so transferring their knowledge to the next generation is an important priority.



**Building:** MGS was located in Pillsbury Hall from 1890 until the 1970s. After a brief stay in Jones Hall, MGS moved in 1970 to a building on Eustis Street in Saint Paul, followed by a move to University Avenue in Saint Paul in 1983. In 2015, we moved to our current location on Territorial Road in St Paul. The new building has worked out well. Nearly every desk is in use, and the fit and function of the facility are very good.

## Current Activities

**Mapping:** Mapping is focused on the county geologic atlas projects that are underway.

**Compilation:** The new Quaternary Geologic Map of Minnesota is complete. This is an update to the 1982 Geologic Map of Minnesota, Quaternary Geology, by H.C. Hobbs and J.E. Goebel. The work was largely funded by a 1:1 cost-sharing agreement with the Great Lakes Geologic Mapping Coalition of the USGS. This multi-year project stitched together many maps created by the County Geologic Atlas program and other mapping programs, and also filled in areas not yet mapped at the more detailed scale. New CGA mapping will be added to the digital database as it becomes available. The map follows construction of pilot statewide cross-sections that depict the vertical and horizontal distribution of Quaternary sediment. At present, subsurface Quaternary geology is being mapped on a statewide basis as cross-sections at a 5-km spacing – this activity is in the third year of a five-year program.

**Databases:** MGS manages several important geoscience databases that support our mapping, and activity by others across the state. The largest and most commonly used is County Well Index, which includes records for more than 500,000 wells, of which about 60% have accurate digital locations. We interpret the driller's description of the materials encountered in drilling and assign rock types and formation names. Our co-manager of this database, the Minnesota Department of Health, has contracted with MGS to add additional data from historical records. Three years ago, Julia Steenberg and Andrew Retzler worked on the 2<sup>nd</sup> of two projects to improve the usability of borehole geophysical and video data. They inventoried and digitally converted analog natural gamma logs, and then inventoried and updated the infrastructure for the multi-parameter, caliper, EM-flowmeter and borehole video logs.

**Research:** A significant development last year has been a very successful implementation of till geochemical methods in stratigraphic characterization of till. In addition, MGS undertakes much research that is needed to optimize our mapping, such as enhanced hydrogeological characterization of sediment and rock strata. Tony Runkel, for example, completed a three-year project that employed new techniques of borehole testing and rock fracture mapping in the Twin Cities to improve understanding of groundwater flow through fractured rock. Application of the results will improve the efficiency and effectiveness of remediation and monitoring at contaminated sites across the Twin Cities. Another project completed this past year evaluated links between southeastern Minnesota stream temperatures, trout habitat, and bedrock hydrogeology to improve trout stream management. The goal of this project was to develop and apply a sensing method using fiber optic cables along trout stream reaches to quantify the changes in temperature, flow, and trout distributions. Stream reaches were chosen based on geologic mapping, focusing in areas where different geologic conditions exist and information on trout distribution and abundance are available. Both of these projects

were funded by the Environmental and Natural Resources Trust Fund (ENRTF) via LCCMR.

Three new groundwater projects were initiated by MGS in the past year, in collaboration with University of Minnesota scientists, partner agencies and consultants. One is an effort to better understand nitrate transport in southeastern Minnesota. This three-year project will provide the information necessary to more accurately determine whether improvements in agricultural practices are improving groundwater quality in the region. A second project evaluates the feasibility of aquifer storage and recovery to alleviate groundwater quantity problems in areas such as Washington County, where aquifer drawdown is believed to impact baseflow to streams and some lake levels. These two projects are funded by ENRTF. The third project, funded in part by MNDRIIVE, focuses on groundwater contamination issues at the University of Minnesota Library Access Center. It targets bioremediation capacity and transport through fractured rock.

## Plans for 2020-2021

### Proposals:

Submit proposal to LCCMR for \$4M to support continued production of County Geologic Atlases; submit proposals to USGS STATEMAP, Great Lakes Geologic Mapping Coalition, and Data Preservation programs

### County Geologic Atlas Program:

Publish county geologic atlases for Rock, Nobles, St. Louis and Lake Counties; conduct field work for surficial geologic map of Chippewa, Red Lake, Polk, Yellow Medicine, Cook, Douglas, Grant, Lake of the Woods, Faribault and Waseca counties; conduct rotary sonic drilling in Lincoln, Pipestone, Yellow Medicine, and Chippewa counties; complete surficial geologic maps and cross sections for Aitkin, Ottertail, Lac Qui Parle, Dakota and Steele counties; complete bedrock geologic maps for Pennington, Ottertail, Dakota, and Lac Qui Parle counties; support partner well locating in Lake of the Woods, Douglas, Grant, Faribault, Waseca, Ramsey, Swift, Lyon and Scott.

### STATEMAP Program:

Surficial and bedrock mapping for portions of Cook County

### Great Lakes Geologic Mapping Coalition:

Continue statewide cross sections at 5 km spacing across north-central Minnesota; correlation in CGA counties to support cross section interpretation at 1- and 5- km spacing; test methods for model construction using 5-km cross-section data

### Research:

Continued work on funded projects addressing fractured bedrock hydrogeology and groundwater-surface water interactions; publication of results from sponsored projects, and research with broad relevance.

### Outreach:

Outreach ranging from public inquiries to academic collaboration – focus on ensuring that our information products can be used efficiently by peer agencies such as the Pollution Control Agency, DNR, industry, and counties.

---

## Minnesota Geological Survey

College of Science and Engineering; University of Minnesota; 2609 West Territorial Road, St Paul MN 55114

Telephone: 612-626-2969; Email: [mgs@umn.edu](mailto:mgs@umn.edu); Web site: [www.mnngs.umn.edu](http://www.mnngs.umn.edu)